



# Head Start Annual Report 2019-2020

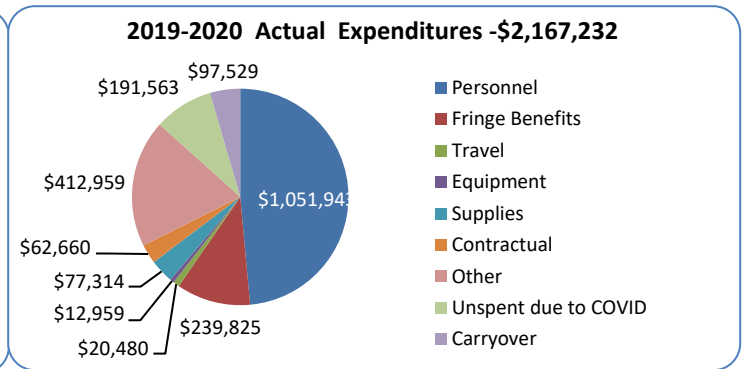
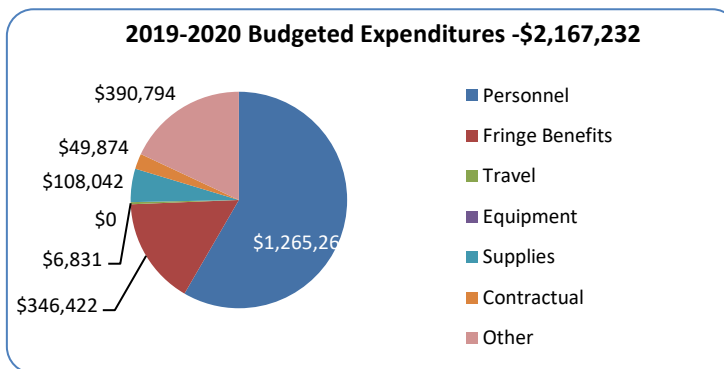
This annual report complies with Public Law 110-134, "Improving Head Start for School Readiness Act of 2007", Administrative Requirements and Standards Sec. 644. (42 U.S.C. 9839).

Rural Resources Community Action, 956 S. Main Street, Colville, WA 99114 (509) 684-8421

***Our Mission is to engage families and community partners in a strength-based program that fosters learning and life skills for preschool children and their families.***

Northeast Washington Early Childhood Program, a program of Rural Resources, provides Head Start preschool services in the Tri-County area, in four locations: Chewelah, Colville, Kettle Falls and Newport. For over 50 years, Rural Resources' Head Start program has provided comprehensive services including home visits, health and developmental screenings, social services, parent engagement opportunities, and child development services to children and their families.

## Budget & Expenditures



## Revenues

Federal HS Funding	\$2,104,029
Community Development Block Grant	\$24,990
USDA Child Meal Reimbursement	\$38,213
<b>Total Revenue</b>	<b>\$2,167,232</b>

## Enrollment

Funded Enrollment	126
Total Children Served	145
Total Families Served	138
Families below 100% of federal poverty level	49%
Families receiving public assistance	15%
Foster children	5%
Families who are homeless	13%
Families between 100% & 130% of federal poverty level	13%
Over Income	5%
Children with Disabilities	13%
Average monthly enrollment	100%
% of eligible children served	100%



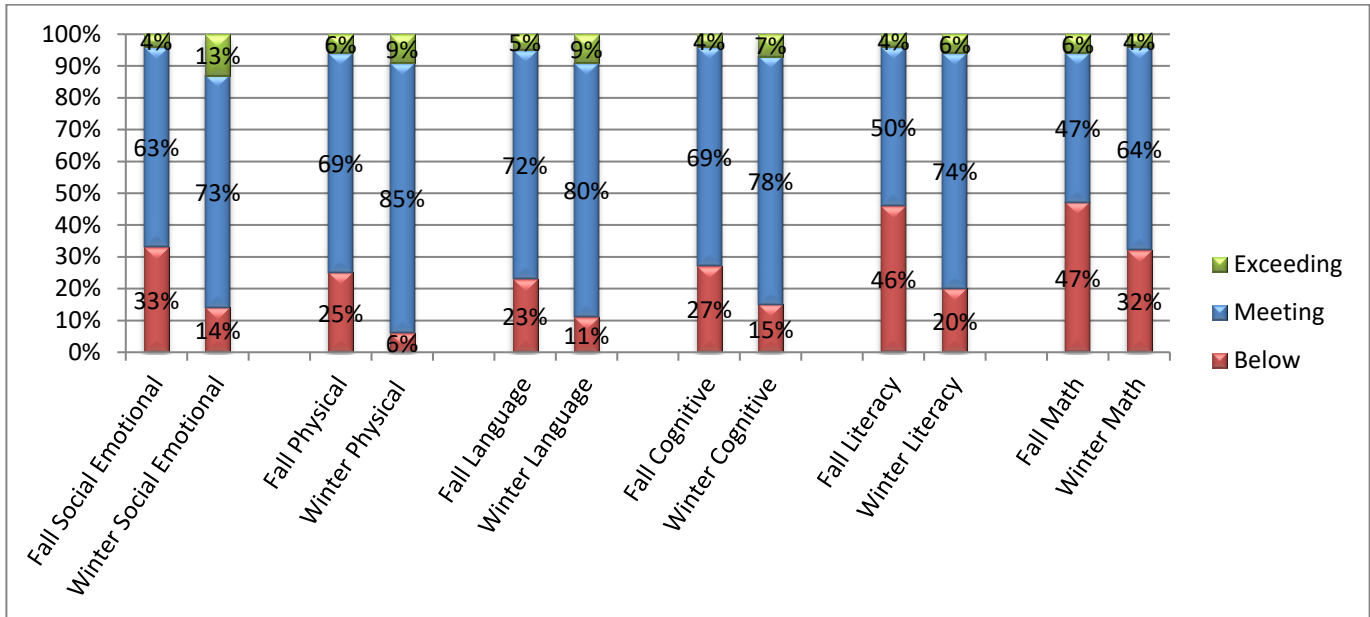
## Medical / Dental Completion Rates \*

(Enrolled more than 45 days)

% Completing Medical Exam	88%
% Completing Dental Exam	58%

\*Limited data due to COVID-19 classroom closures

## Comparison of Fall 2019 GOLD Checkpoint to Winter 2020 Checkpoint Head Start Classrooms Program Wide



### School Readiness

Children enrolled in Northeast Washington Early Childhood Program typically receive three assessments during their participation in the Head Start program but with the sudden and unexpected shut down in March due to the COVID-19 pandemic, they were only able to receive two assessments. The graph above reflects the last assessment completed in January for the 2019-2020 program year. Despite restrictions for in-person classes, teachers continued to provide learning experiences via mail home activities and weekly contact in efforts to prepare children for kindergarten. Trends from Fall to Winter show that children were making gains in all learning domains. NE WA Early Childhood Program expects that Spring Outcomes would have continued to show significant progress made toward school readiness for all Head Start children.

### Family Engagement Activities

The program has adopted the Parent, Family, and Community Engagement Framework as its guide for creating strong relationships with parents. This approach enhances the ability of parents and staff to work together to support each child's growth and learning in class and in the home with a goal of kindergarten readiness. Parents provide ongoing input into their child's educational goals and the classroom curriculum. Family Advocates work closely with parents to address challenges and barriers to meeting their families' needs. Parents are encouraged to participate in Health Advisory Committee, Self-Assessment Team, to attend parent events at the centers and to provide input into our menus and classroom lesson plans. Parents participated in a series of Love and Logic™ parenting classes in each community. Approximately 20 parents served on Policy Council providing oversight of the program and gaining leadership skills.

### Federal Monitoring Review

The most recent program review was conducted in March of 2020. This review focused on performance and compliance with the requirements of the Head Start Program Performance Standards, or Public Law 110-134, Improving Head Start for School Readiness Act of 2007. There were no areas of deficiency, non-compliance or concern.

### Financial Audit

There were no findings in the most recent Fiscal Audit for agency fiscal year ending, February 2020. The entire audit is found on the agency's website at [www.ruralresources.org](http://www.ruralresources.org).