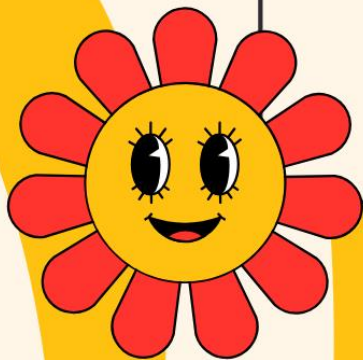




Rural Resources Community Action



Community Resource Guide May 6th



If you would like to make an appointment
or need more information,
please contact us:
Phone: (509) 684-8421 or
(877) 219-5542

Website: www.ruralresources.org
Email: info@ruralresources.org

Helping People, Changing Lives



Explore Rural Resources Programs

For more information about these services or to see if you qualify, please visit our website at ruralresources.org or call 509-684-8421.

BASIC FOOD OUTREACH

BFO has the goal of making sure that people are aware of, and have access to, the Basic Food Assistance Program (SNAP), ultimately reducing hunger and food insecurity in our area.

CAREGIVER COFFEE & SUPPORT GROUPS

These groups are a safe place to meet for people who are taking care of a family member. It is a place to talk about the joys and frustrations that come with providing care for a loved one. It is a judgment-free environment to get support, find resources and new ideas. Coffee and food are provided. Groups are held twice a month and are located in Pullman, Colfax and Malden. All unpaid caregivers are welcome to attend.

SEXUAL ASSAULT

Sexual assault is any form of sexual activity that happens without a person's permission. Sexual assault does not always include sexual intercourse and can include any contact with private body parts that you don't want, don't agree to, or are coerced/forced to do. It can also include showing someone sexual images that they do not wish to see or sharing sexual images of a person without their consent. Our services are free, confidential, and non-judgmental.

HOUSING & ESSENTIAL NEEDS

The Housing and Essential Needs program (HEN) is a referral-based program focused on assisting single adults who are temporarily or permanently disabled and unable to work. This program can provide a hygiene bag, homeless prevention, and rapid rehousing assistance for as long as DSHS determines them to be eligible.

GOLD STAR SHELTER

The Gold Star Shelter is a 7-bed facility set up for communal living. The primary objective of the shelter is to assist clients in becoming stable in their housing. The shelter serves homeless veterans above all other situations, but can also serve general homeless males, provided space is available.

VOLUNTEER RIDES

Volunteer transportation is available, primarily for necessary appointments such as medical and social services, usually to larger communities. **Note:** Dispatch is located at the Colville – Main Office

COMMUTER BUS

We offer a fixed route service at 50 cents per one-way trip between Kettle Falls, Colville and Chewelah for morning and late afternoon commuters. (Passes can be purchased at the Rural Resources main office in \$20 denominations for 40 trips.). Transfers occur in Colville for passengers traveling between Kettle Falls and Chewelah.

SENIOR NUTRITION

Under-nutrition, malnutrition, isolation, and depression are common among elderly hospital patients and residents of long-term care facilities. But they also affect a growing number of independent adults, particularly low-income seniors living alone. For older adults in our community, Rural Resources offers nutrition programs that help combat these issues.

HEAD START & EARLY CHILDHOOD EDUCATION AND ASSISTANCE PROGRAM (ECEAP)

The Northeast Washington Early Childhood Program helps children and families prepare for kindergarten and beyond. Our Head Start, Early Childhood Education and Assistance Program (ECEAP, pronounced e—cap) and Access to Baby & Childhood Dentistry programs help to meet our Mission. Our preschool classrooms support the mental, social, and emotional development of children from age 3 to age 5. Program services are responsive to each child and family's ethnic, cultural, and linguistic heritage. Enrollment is at no cost to a family and includes preschool education, health services coordination, and family support services.

KINSHIP CARE

Our Kinship Navigator provides grandparents and relatives who are raising children, connections with community resources such as health, financial, legal services, support groups, training, and emergency funds. Kinship services help kinship families establish or maintain greater self-sufficiency and long-term stability needed to keep their children out of the foster care system.

VICTIM SERVICES VOLUNTEER PROGRAM WANT TO MAKE A DIFFERENCE? VOLUNTEER!

Volunteers play an essential role in supporting survivors. We provide all necessary training and education to our volunteers. As a new volunteer, you will join a community of supportive people that all have the same goal: supporting survivors, giving hope, and preventing violence.

HEALTH HOME PROGRAM

Services to support participants who have serious chronic conditions and have social service needs. The Health Home Program provides care coordination of medical, behavioral health and long-term services and support for individuals of all ages. It is a Medicaid/Medicare benefit now available at no cost to the participant. The program supports participants in improving their quality of life, helps with post-hospital care, helps manage multiple providers, assist with getting to appointments, identifies helpful community resources, and helps participants get connected to available benefits.

STEVENS COUNTY EMERGENCY SHELTER

The Stevens County Emergency Shelter is a 4-unit facility consisting of 12 beds and one fully ADA accessible unit. The primary objective of the shelter is to assist clients in becoming stable in housing. The shelter serves women with children and female domestic violence victims above all other situations, but can also serve general homeless females, provided space is available.

TAILORED SUPPORT FOR OLDER ADULTS

Provides personalized support at home for individuals over the age of 55 who require assistance with personal care and household tasks and do not have a caregiver. There are functional and financial requirements for program eligibility.

SENIOR LEGAL ASSISTANCE

Legal Assistance is made available to lower-income seniors age 60+. Qualified recipients will receive a one-time consultation with a participating attorney.

CHEWELAH SHUTTLE SERVICE

Mondays and Wednesdays we offer a shuttle in Chewelah, by reservation, from 9:30 am to 11 am for clients who live in the city limits and need to access Chewelah area shopping or appointments. Reservations need to be placed with the dispatch office no later than noon on the business day before the date of the event. i.e., Friday by noon for Monday.

VICTIMS OF CRIME

If you are the victim of a crime, our knowledgeable victim advocates are here for you. We can offer legal advocacy, emergency financial assistance, safety measures and planning, and many other services you may not be aware of. We serve victims of all crime types, including but not limited to:

- Arson
- Assault
- Attempted Homicide or a Survivor of a Homicide Victim
- Burglary
- Child Abuse (physical & sexual)
- Domestic Violence
- Elder Abuse
- Fraud
- Harassment
- Hate Crimes
- Human Trafficking
- Identity Theft
- Kidnapping/Missing Persons
- Property Crime
- Sexual Assault
- Vehicular Assault

Our services are free, confidential, and non-judgmental.

TRANSPORTATION DIAL-A-RIDE

We provide Dial-A-Ride (DAR) service for persons of special needs (persons with disabilities, too old or young to operate a vehicle, and low income) in Stevens, Pend Oreille, Ferry counties and support for Veterans and access Veteran services in the Highly Rural areas. Dial-A-Ride also supports remote trips into Colville, Kettle Falls, and Chewelah for basic necessities including fresh food, legal, medical, intermodal, recreation, and other peer and social opportunities. Volunteer transportation is available, primarily for necessary appointments such as medical and social services, usually to larger communities.

TENANT BASED RENTAL ASSISTANCE (TBRA)

The Tenant Based Rental Assistance (TBRA) Program provides very low-income households with rent costs for up to 24 months – if funding allows. TBRA is a referral program. A case worker or an outreach worker who is currently assisting the applicant may refer the person to the program.

CHILDREN'S ADVOCACY CENTER

The Children's Advocacy Center offers community-based, child-friendly, trauma-informed multi-disciplinary services for children who have been victims of sexual violence, physical abuse, or neglect.

STATE HEALTH INSURANCE BENEFITS ADVISORS (SHIBA)

SHIBA Volunteers help people with Health Care Fraud issues, errors and abuse in the Medicare Program, Private Insurance, Employer Plans, Prescription Assistance, Medicaid, Medicare Savings Program, Low Income Savings/Extra Help, Medicare Part D, Medicare Fraud, COBRA, Medicare Advantage Plans (Stevens County only), and Medicare Supplement Plans (Ferry, Lincoln, Stevens).

FOUNDATIONAL COMMUNITY SUPPORTS, SUPPORTIVE HOUSING

Provides targeted case management for clients experiencing issues either obtaining or maintaining housing and qualify for the service by having issues with substance abuse, mental health disorders, or chronic illness. Case management addresses both housing and other social supports to assist long term housing stability.

CONNECTIONS RECOVERY CAFÉ

The Connections Recovery Café is a safe, supportive, sober environment for people to gather who are in recovery from addiction, substance use disorder, or other challenges. Our mission is to create a community of hope and healing, where every individual is valued, supported, and empowered on their recovery journey. Rooted in the belief that every life matters, we provide a nurturing environment that fosters connection, resilience, and growth.

Many people in recovery only receive support when they're in crisis. Through the Café model and our Recovery-Oriented System of Care, participants can receive ongoing support across all phases of recovery. This support from peers and Café staff, as well as access to other services and resources, can empower individuals to manage their health, maintain sobriety, build community, and reclaim their lives.

ALLEGIANCE ASSISTED LIVING

Allegiance Assisted Living is a licensed residential facility based in Chewelah which provides care to residents in a home-like setting. We provide services to those with Intellectual Disabilities, Mental Health issues, Traumatic brain Injuries, and others with special needs. Our goal is to provide quality care in an environment that promotes dignity, respect, and resources so the individual can achieve their highest level of independence.

WEATHERIZATION ASSISTANCE PROGRAM

The Weatherization Assistance Program (WAP) enables low-income families to reduce their energy costs by increasing the energy efficiency of their homes while ensuring their health and safety.

REPRESENTATIVE PAYEE PROGRAM

This program assists those who may need additional assistance managing their Social Security or fixed sources of income. Our financial counselor works directly with clients or their appointed representatives to ensure security in housing, food, and medical needs. Through financial management, our payee services provide protection from financial abuse and victimization. Our clients achieve greater financial stability and independence.

HOMEOWNERSHIP / HOME BUYERS PROGRAM

With Rural Resources, the dream of home ownership is within your reach. We offer education and counseling to connect homebuyers of all income levels to the information and resources you need. We also provide counseling and assistance in linking first-time homebuyers and previous homeowners to a variety of different down-payment assistance programs and home loans.

VICTIM SERVICES TRIBAL PROGRAM

The Tribal Program seeks to provide community-based advocacy and violence, abuse, and crime prevention programming in a culturally responsive manner to Indigenous survivors, Descendants, and their families. The Tribal Program building, located in Inchelium on the Confederated Tribes of the Colville Reservation, is named sn̓x̓əstwilxtn, which translates to “the place where you heal yourself”.

EMPLOYMENT TRAINING & SUPPORT

We help you explore training options that lead to a credential and if enrolled, also provide assistance with tuition and training costs. In addition, we may also provide Support Services such as gas vouchers, work clothes, etc. while you're in training. Examples include truck driver training (CDL), Certified Nursing Assistant (CNA), welding and industrial manufacturing technology and phlebotomy. Our programs can pay tuition, books, and other training related expenses. Support Services may include the purchase of work clothes, tools, gas vouchers, auto-insurance, food handler's permit.

INFORMATION AND REFERRAL / OPTIONS COUNSELING

This service provides information and connects individuals to resources within the community to stabilize independence. We help people make informed decisions regarding available resources to help maintain independent living within the community. Through phone calls or in-person meetings with individuals and families, we empower people to plan for their immediate and long-term needs.

ON THE JOB TRAINING

We reimburse employers the costs of training you and you learn an occupation while working and getting paid. Support Services such as gas vouchers, work clothes, etc. while you're participating in on-the-job training.

DOMESTIC VIOLENCE

Domestic Violence (DV) is a pattern of assaultive and coercive behaviors, including physical, sexual, and psychological attacks, as well as economic coercion, that adults and/or adolescents use against their intimate partners to gain and maintain power and control. It involves learned behavior that is intentionally chosen by an abuser. DV occurs in heterosexual, gay, lesbian, bisexual, and trans intimate partner relationships in which the individuals are dating, married, separated, or divorced. Domestic violence knows no boundaries and affects people from all ages, races, socioeconomic levels, religions, cultures, and education levels. Our services are free, confidential, and non-judgmental.

HOMELESS DOCUMENT RECORDING FEES

HB2163 is primarily used to help prevent homelessness for individuals and families facing eviction and rapid rehousing for individuals and families who do not meet CHG requirements. These funds can be utilized to assist with first, last and/or security and rental assistance on a month-to-month basis.

LOW INCOME APARTMENT RENTALS

We have 6 low-income apartment communities in 3 counties. Applications are available at our main office.

SECTION 8 HUD HOUSING

This is a rent subsidy program funded by the Department of Housing and Urban Development (HUD). This program is designed to assist low-income families, disabled individuals and the elderly to find safe, decent and sanitary housing they can afford.

PAID WORK EXPERIENCE

If you have little or no work history, we can provide temporary paid employment so you can build your resume and develop positive work habits. In addition, we may also provide support services such as gas vouchers, work clothes, etc. while you're participating in the work experience.

HOMEOWNERSHIP FORECLOSURE PREVENTION AND DEFAULT COUNSELING

We offer help for those who are having trouble making their mortgage payments or have already fallen behind. The earlier you reach out for help, the more options you'll have. Homeowners will work on improving their finances and work with a counselor to prepare documents needed for a loan modification. We will assess your financial situation and hardship, we can explain the different workout options, provide budget counseling, assist in submitting loan modification application and facilitate.

CONSOLIDATED HOMELESS GRANT

The Consolidated Homeless Grant (CHG) is an emergency rental assistance program primarily used to rapidly rehouse homeless individuals and families and victims fleeing domestic violence into units that meet Stevens County Fair Market rent. These funds can be utilized to assist with first, last and/or security and rental assistance on a month-to-month basis. It may also be used for homeless prevention by paying past due rent.

ENERGY ASSISTANCE

Home is where the heat is. No one should be forced to decide between paying for food and paying for heat this winter. If you or someone you know is facing this choice or is just having trouble paying their utility bills, Rural Resources Community Action can help. In cooperation with other agencies and with local utilities, we offer several different programs to assist:

- Low-income families
- Disabled individuals
- Seniors on low and fixed incomes
- Residents in danger of losing their heat source
- Utility customers in need

We also provide low- to no-cost weatherization help and energy-saving tips and information.

COMMUNITY ENGAGEMENT DEPARTMENT

The Community Engagement Department is responsible for outreach, education, and prevention activities related to violence, crime, and abuse.

Services We Provide:

- Materials and information about Rural Resources Victim Services for community organizations, system partners, and/or potential clients
- Materials and information about various types of victimization and abuse
- Presentations related to crime victimization information or agency services
- Training that builds skills around a variety of topics, including but not limited to victimization, communication strategies, supporting survivors, cultural competency, trauma-informed care, etc.
- Prevention programs that address underlying causes of violence and abuse to prevent first-time perpetration of crimes or abuse.
- Please contact the Community Engagement Program Manager if you are interested in any of these services.

Rental Properties

Landlord / Facility Name	Contact Information	Facility Location	Accepts HUD Voucher?	Housing Type
Cedar Center Apartments (Family Complex)	(509) 935-8987 (541) 398-8968 chew@viridianmgt.com	Chewelah	Yes	Apartments
Chewelah Meadows (Senior / Disabled Housing)	(509) 935-8987 (541) 398-8968 chew@viridianmgt.com	Chewelah	Yes	Apartments
Sunny Acres Senior Housing (Seniors over 62 and/or disabled)	(509) 935-4811 sunny.acres@ad-west.com	Chewelah	Yes	Apartments
Chewelah Manor (Senior/Disabled Housing) Cliff Mackey	(509) 935-6966	Chewelah	Yes	Apartments
Crestmore Apartments	(509) 936-5268	Chewelah	Yes	Apartments
Clayton Meadows (Hunt Rentals)	(509) 951-2727	Clayton	Yes	Mobile Home Court
Columbia Apartments (Disabled Housing) Angie	(509) 601-7369	Colville	Varies	Apartments
Colville Park Apartments	(509) 684-8728	Colville	Yes	Apartments
Highlands Apartments (Senior / Disabled Housing)	(509) 684-4387 hlds@viridianmgt.com	Colville	Yes	Apartments

Landlord / Facility Name	Contact Information	Facility Location	Accepts HUD Voucher?	Housing Type
<p>Rhodena Apartments <i>(Applications available at Colville Catholic Charities office)</i></p>	(509) 358-4250	Colville	Yes	Apartments
<p>Panorama Mobile Home Park Roger</p>	(509) 675-6088	Colville	Yes	Mobile Home Court
<p>Central Colville Apartments  <i>(Managed by Rural Resources)</i></p>	(509) 684-3932 (877) 219-5542	Colville	Yes	Apartments
<p>Cook's Apartments</p>	(509) 690-2377	Colville	Yes	Apartments
<p>Colville Meadows (Disabled Housing) Angie</p>	(509) 601-7369	Colville	Varies	Apartments
<p>North Hill Apartments  <i>(Owned and managed by Rural Resources)</i></p>	(509) 684-3932 (877) 219-5542	Colville	Yes	Apartments
<p>Valley Breeze  <i>(Owned and managed by Rural Resources)</i></p>	(509) 684-3932 (877) 219-5542	Colville	Yes	Apartments
<p>Hudesman House Angie (Senior Housing 62+)</p>	(509) 601-7369	Colville	No	Apartments

Landlord / Facility Name	Contact Information	Facility Location	Accepts HUD Voucher?	Housing Type
Hunters Senior Apartments  <i>(Owned and managed by Rural Resources)</i>	(509) 684-3932 (877) 219-5542	Hunters	Yes	Apartments
The Falls <i>(Senior / Disabled Housing)</i>	(509) 412-0918 Office Hours M-F 10am – 2pm	Kettle Falls	Varies	Apartments
Wood Haven	(509) 738-2126 Office Hours M-F 10am – 2pm	Kettle Falls	Varies	Apartments
Gold Hill Manor <i>(Senior / Disabled Housing)</i>	(509) 738-2113 goldg@centurytel.net	Kettle Falls	No	Apartments
Kaniksu Village Apartments Angie	(509) 601-7369	Metaline Falls	Varies	Apartments
Quail Manor  <i>(Owned and managed by Rural Resources)</i>	(509) 684-3932 (877) 219-5542	Newport	Yes	Apartments
Newport Pines Apartments Angie	(509) 601-7369	Newport	Yes	Apartments
Greenwood <i>(Senior/Disabled)</i>	(509) 447-0207	Newport	Yes	Apartments
Mountain View <i>(Senior/ Disabled)</i>	(509) 447-0207	Newport	Yes	Apartments

Landlord / Facility Name	Contact Information	Facility Location	Accepts HUD Voucher?	Housing Type
Pend Orielle West (Senior/ Disabled)	(509) 447-0207	Newport	Yes	Apartments
River Bend Village	(509) 447-0207	Newport	Yes	Apartments
Willow Glen	(509) 447-0207	Newport	Yes	Apartments
Frontier Springs Apartments	(509) 775-2973	Republic	Yes	Apartments



AFFORDABLE HOUSING

Viridian Management, Inc. is a full-service property management company specializing in affordable housing. To learn more about the selection criteria for these properties, or apply online, visit www.viridianmgt.com.

Property Name	Address	Email	Phone	Bdrm	Type
Beardmore East	303 E Harriet, Priest River ID	bme@viridianmgt.com	(509) 447-0207	1	Eld/Dis
Cle Elum Manor	100 N Pennsylvania Ave, Cle Elum WA	clem@viridianmgt.com	(509) 674-4771	1-2	Eld/Dis
Deer Park Meadows	15 N Weber Rd, Deer Park WA	dpm@viridianmgt.com	(509) 276-9293	1-3	Family
L & S Cedar Center	S 402 5th St E, Chewelah WA	cctr@viridianmgt.com	(509) 935-8987	1-3	Family
L & S Chewelah Meadows	420 5th St, Chewelah WA	chew@viridianmgt.com	(509) 935-8987	1-2	Eld/Dis
L & S Fir Meadows	223 W 3rd St, Deer Park WA	fmdw@viridianmgt.com	(509) 276-9293	1-2	Eld/Dis
L & S Greenwood Village	427 W Willow St, Newport WA	gwd@viridianmgt.com	(509) 447-0207	1	Eld/Dis
L & S The Falls	550 E 8th Ave, Kettle Falls WA	fall@viridianmgt.com	(509) 738-2126	1	Eld/Dis
L & S The Highlands	542 S Summit St, Colville WA	hlds@viridianmgt.com	(509) 684-4387	1	Eld/Dis
L & S Willow Glen	1600 W 7th St, Newport WA	wgln@viridianmgt.com	(509) 447-0207	1-3	Family
Mountain View	401 N Spokane Ave, Newport WA	mtvw@viridianmgt.com	(509) 447-0207	1-2	Family
Murray Apts	238 Sherman Ave, Priest River ID	murr@viridianmgt.com	(509) 447-0207	1-2	Family
Pend Oreille West	100 N Spokane Ave, Newport WA	pow@viridianmgt.com	(509) 447-0207	1	Eld/Dis
Pine Wood Village	7032 W Heritage St, Rathdrum ID	pwv@viridianmgt.com	(509) 447-0207	1-2	Eld/Dis
Prosser Manor Apts	1403 Meade Ave, Prosser WA	pman@viridianmgt.com	(509) 786-3832	1	Eld/Dis
River Bend Village	1701 W 7th St, Newport WA	rbv@viridianmgt.com	(509) 447-0207	1-3	Family
The Meadows	1010 S 9th St, Yakima WA	mdws@viridianmgt.com	(509) 453-0943	1	Eld/Dis
Timberlane Apts	5923 W Massachusetts, Spirit Lake ID	tlan@viridianmgt.com	(208) 627-7697	1-3	Family
Valley Green	116 S Ash St, Warden WA	vgv@viridianmgt.com	(509) 349-2679	1-2	Eld/Dis
Vista Park Village	800 S Country Rd, Warden WA	vpv@viridianmgt.com	(509) 349-2679	1-3	Family
Woodsvilla Apts	1015 Oakhurst Dr, Elma WA	wdvl@viridianmgt.com	(360) 482-4840	2-3	Family

Persons with disabilities who require alternative means of communication for program information (e.g., Braille, large print, audiotope, American Sign Language, etc.) should contact the responsible Agency or USDA's TARGET Center at (202) 720-2600 (voice and TTY) or contact USDA through the Federal Relay Service at (800) 877-8339. Additionally, program information may be made available in languages other than English.



This institution is an equal opportunity provider.





COMMUNITY HEALTH FAIR COLVILLE

FREE RESOURCES & INFORMATION TO HELP YOU ON YOUR HEALTH JOURNEY

**WEDNESDAY
JUNE 4, 2025
10AM-2PM**

VENDORS

**RURAL RESOURCES
956 S MAIN ST**



CONNECTIONS
recovery café



Fred Hutch
Cancer Center



Visit Rural Resources' free Community Health Fair to find solutions to your health needs, explore services and resources, learn about wellness and prevention, and get connected.

Not sure where to start? We can help you!

For more information or to be a vendor please contact:

Lisa Hoover
lhoover@ruralresources.org
509-685-6009



FREE BIKE HELMETS

Bring your bikes for a free traffic garden safety ride!

Helmets provided by



Washington State Health and Food Benefits

Why would I use these sites?

There are many reasons to use these sites. First, these sites offer you the ability to check for various services and programs that may be available to you. Second, it provides a vast array of information on resources available in the community. Third, you can apply for some programs on these sites - specifically health care and food benefits.

Health Care the Washington Health Plan Finder offers healthcare coverage for children, parents/caretakers with children, pregnant women, or adults age 18 to 64 years old. For information regarding available services or to apply for benefits, visit **www.healthplanfinder.org**

Food Benefits Washington Connection offers a fast and easy way for families and individuals to apply for a variety of services such as Food, Cash, Child-Care, Long-Term Care, and Medicare Savings Programs. Individuals that are age 65 or older, blind, or disabled, may also apply for assistance. Apply for services online at www.washingtonconnection.org

Or visit our Home & Community Services Colville Office at:
1100 S. Main St. Colville, WA. 99114. Or call (877) 501-2233.

Who are these sites for?

These sites are designed for anyone who would like to find out what benefits and programs they might qualify for in the state of Washington. The online application is for residents of Washington State to apply for Federal, State, and local benefits.

What qualifies as a Washington State Resident?

A resident is someone who is living in Washington and is not receiving assistance from another state or tribe. A resident under special circumstances for nursing facilities is someone who enters Washington solely for medical care in a nursing facility. A person placed in a nursing facility by another state is considered a resident of the state that placed them. Residency requirements for Temporary Visa Holders must first meet citizenship and alien status as they are stated in:
<http://app.leg.wa.gov/wac/default.aspx?cite=388-424>

How long will it take to check eligibility and apply?

The See if I Qualify screening may take as little as 15 minutes. The online application, Apply Now can take about an hour to complete. There is no cost to you for the "See if I Qualify" screening or submitting an application.

When will I know which programs, I am eligible for?

When you have entered all your information in the See if I Qualify screening, a results page displays showing benefits and programs you may qualify for.

Will the online application save my information if my computer browser times out?

The online application automatically saves each time you navigate to a new page. However, if you have not created a SecureAccess Washington (SAW) account, you may not be able to access your application information again.

Now that my application has been submitted, what do I need to do next?

If you are submitting an application online during regular business hours, it is available for processing within just a few minutes. If you are submitting an application online after normal working hours (after 5pm, or on weekends/holidays) it will be dated as received on the next regular business day. Some programs require an interview, others do not.

You will receive a letter in the mail notifying you of the next steps. You may be contacted to provide additional information or proof of your circumstances such as: Social Security Numbers if not already provided

Proof of income such as: copies of checks, check stubs, letters, or statements from anyone who gave your household money.

Proof of resources you may have, such as vehicle registration, bank statements, stocks, bonds, or life insurance policies.

Proof of cost of childcare or dependent adult care such as a receipt from your provider.

Proof of housing costs such as mortgage payments, property tax payments, homeowner's insurance, rent receipts, copy of your lease, utility bills, letter from your landlord.

Other proof such as unpaid medical bills, health insurance premiums, pregnancy with due date, changes to your immigration or citizenship status, adoption support or foster care payments.

If you applied for cash, medical, food assistance, or childcare subsidy programs.

Your application will be sent to DSHS for processing; except if you are applying for the Childcare Subsidy Program your information will be sent to the Department of Children, Youth, and Families for processing. To process your application for cash and food assistance faster, call us between 8am and 5pm, Monday through Friday at 1-877-501-2233; or visit us in person at 1100 S. Main St. Colville, WA.

To process your application for childcare, you can call the Department of Children, Youth, and Families between 8am and 5pm Monday through Friday at 1-844-626-8687.



Need Help Getting a Job? Work Source Can Help

Services offered in Stevens, Ferry, and Pend Oreille Counties

Main Office 956 S. Main, Colville

Contact: 509-685-6158 Toll Free 800-776-2178

Services offered:

- Resource Room – free access to computers, copiers, and job search resources.
- Training Assistance – Paid On the Job Training, help paying for classes; including CNA and CDL training.
- Support Services such as gas vouchers and work clothes for *participants.
- Veteran Services.
- Workshops including Resume Building, Positive Interviewing, and Skills, Abilities and Job Search.

**Participants must meet eligibility requirements*

Strategies for Success Workshops

Class times: 9:00-12:00pm Monday, Tuesday, Wednesday, & Thursday

- Learn how to multitask and stay motivated.
- Explore your personal leadership and organization skills.
- Learn to evaluate trauma vs. drama and how to manage the unexpected
- Understand cognitive bias and how it impacts every decision we make
- Develop a solid vision for a professional future



Current Job Postings

For more information and job postings go to <https://seeker.worksourcewa.com/>

Colville, WA

Cook- Providence St. Joseph Health

Description Under the general supervision of the Food Service Manager, the Cook will prepare food for patient services, cafe and catering. All items will be prepared according to standardized ...

Wildland Fire Dispatch Supervisor – Washington State Department of Natural Resources

East Zone IA Supervisor, Wildland Fire Dispatcher 4 (WFD4) Work Hours flexibility may be available and considered Salary: \$3,811.00 - \$5,117.00 Monthly Want to join something GREAT and make a ...

Welder- Colmac Coil

Join our team where you will get to play an important role on projects in the food processing, cold chain, power generation, and other exciting markets. This is a position with a lot of growth ...

Tire & Lube Tech- A Automotive

JOB REQUIREMENTS 1 To read and understand the employee manual. 2 Maintain and clean work area floors and benches. 3 ...

Bookkeeper- Colville Bookkeeping

Colville Bookkeeping is looking to hire someone to join our team in our Colville office. We would prefer someone with bookkeeping experience (preferably using QuickBooks). Bookkeeping experience is ...

Mobile Associate - Retail Sales- T-Mobile

At T-Mobile, we invest in YOU! Our Total Rewards Package ensures that employees get the same big love we give our customers. All team members receive a competitive base salary and compensation ...

Beverage Cart Attendant- Dominion Meadows

PRINCIPAL SUMMARY Assists the Head Golf Professional in managing all aspects of the golf experience on the golf course and for golf events. Occasionally it may include golf shop, player services, and ...

shop helper- Colville Motor Sports

Job Purpose: Complete projects by performing tasks that help mechanics. Duties: * Organizes work assignments by gathering required tools, equipment, materials, and supplies. * Completes assignments ...

Retail Sales Associate- R.E. Lee Shoe Co

Job Purpose: Serves customers by helping them select products that work for them and their needs Duties: * Welcomes customers by greeting them; offering them assistance. * Directs customers by ...

Forklift Operator - Swing Shift- Vaagen Bros. Lumber

Forklift Vaagen Bros. Lumber Inc. is a family-owned wood products manufacturer that has operated in northeastern Washington for over 70 years. We heavily believe in continuous improvement and ...

Yard Person- Colville Builders

COLVILLE BUILDERS is hiring! Full-time Yard Position Starting wage is \$16.66/hr Duties include: - Overall yard maintenance and organization - Good customer service skills - Loading and unloading ...



Rural Resources Current Job Postings Located at the Colville Office
For more in-depth job descriptions or to apply, visit:

Division Director, Senior and Independent Living Services

Summary

Rural Resources Community Action (RRCA) is seeking a dedicated and experienced Division Director for Senior and Independent Living Services to join our team. The Division Director plays a pivotal role in planning, organizing, promoting, developing, and managing all operations of the Senior and Independent Living Services Division to meet the needs and fill service gaps in the service area. This position oversees various programs, including Title XIX Case Management, Kinship Caregiver Support Program, Family Caregiver Support Program, and more. The Division Director collaborates with senior leadership to align strategies with organizational goals and serves as a vital link between RRCA and funding organizations.

If you believe in the power of community action to drive change and are eager to support our mission of empowering people and communities, apply today to join RRCA and make a meaningful impact!

Salary Information

Our Division Director position is offered at \$6,615 – \$7,018 per month. Actual wage will vary depending on factors, including but not limited to, experience and qualifications. Employees who successfully meet or exceed performance expectations during their annual performance evaluation will be eligible for a 3% wage increase. The full salary range for this position is \$6,615 – \$10,933 per month and represents the low and high end of the total salary range for this position.

Cultural Wellness Facilitator (Inchelium, WA)

Summary

Rural Resources Community is seeking a **Cultural Wellness Facilitator**. This is a part-time (Benefit Ineligible), temporary position (8 hours per week ending 6-30-25), non-exempt position based in our Inchelium, WA office.

If you are passionate about making a difference in the lives of individuals and communities and thrive in creating dynamic culture-based healing programs this may be the position for you!

At RRCA, we are dedicated to assisting people and communities in developing the skills, resources, and services necessary to improve their general welfare and we need a Cultural Wellness Facilitator who shares that passion.

Salary Information

Our Cultural Wellness Facilitator position is offered at \$19.87 to \$21.49 per hour. Actual wage will vary depending on factors, including but not limited to, experience and qualifications. Employees who successfully meet or exceed performance expectations during their annual performance evaluation will be eligible for a 4% wage increase.

The full salary range for this position is \$19.87 to \$52.96 per hour and represents the low and high end of the total salary range for this position.

Classroom Kitchen Aide (Temporary/On-call)

Summary

Rural Resources Community is seeking a Classroom Kitchen Aide. This is a Temporary/On-call position based in our Colville, WA Smart Start Learning Center.

If you are passionate about making a difference in the lives of individuals and communities and thrive in creating a positive and lasting impact on children, this may be the position for you!

Salary Information

Our Classroom Kitchen Aide position is offered at \$18.48 to \$19.99 per hour. Actual wage will vary depending on factors, including but not limited to, experience and qualifications. Employees who successfully meet or exceed performance expectations during their annual performance evaluation will be eligible for a 4% wage increase.

The full salary range for this position is \$18.48 to \$30.77 per hour and represents the low and high end of the total salary range for this position.

Lead Teacher I & II (Smart Start, Colville, WA)

Summary

Rural Resources Community Action (RRCA) is seeking dedicated Lead Teachers for our Early Childhood Education program. The Lead Teacher oversees the daily operation of a preschool classroom, plans, coordinates, and implements educational plans for preschool children, and integrates trauma-invested practices that support social-emotional learning and self-regulation. This role involves working closely with families to enhance their knowledge of child development and parenting techniques, providing supervision and guidance to other teachers, staff, and volunteers, and contributing to the development of systems and programs.

Salary Information

Our Lead Teacher Level I position is offered at \$21.96-\$23.75 per hour with a full salary range of \$21.96- \$58.53. Our Lead Teacher Level II position is offered at \$23.93- \$25.88 per hour with a full salary range of \$23.93 -\$63.80. Actual wage will vary depending on factors, including but not limited to, experience and qualifications. Employees who successfully meet or exceed performance expectations during their annual performance evaluation will be eligible for a 4% wage increase. The full salary range for this position represents the low and high end of the total salary range for this position.

Case Manager or Trainee

Summary

Rural Resources Community Action (RRCA) is seeking a dedicated Case Manager or Trainee for the Senior and Independent Living Services program. This role involves providing comprehensive case management services to individuals or families, assessing needs, developing and monitoring service plans, making appropriate referrals, and serving as a client advocate. The position requires knowledge of community resources and relevant laws and regulations.

Salary Information

Our Case Manager position is offered at \$21.65-\$23.42 per hour with a full salary range of \$21.65 \$57.73. Our Trainee position is offered at \$19.87- \$21.49 per hour with a full salary range of \$19.87 -\$52.96. Actual wage will vary depending on factors, including but not limited to, experience and qualifications. Employees who successfully meet or exceed performance expectations during their annual performance evaluation will be eligible for a 4% wage increase. The full salary range for this position represent the low and high end of the total salary range for this position.



CONTACT OUR OFFICE: +1 (509) 855-4693

FIND US ONLINE: ruralresources.org

FREE FOOD EVENT SCHEDULE

LOCATION	DATE	TIME
WEST END MOBILE FOOD PANTRY ASSEMBLY OF GOD CHURCH, 6438 WEST END RD. FRUITLAND, WA.	5/7/2025	11AM-1PM
ONION CREEK MOBILE FOOD PANTRY ONION CREEK STORE, 2191 ONION CREEK RD. COLVILLE, WA.	5/13/2025	11AM-1PM
KELLER MOBILE FOOD PANTRY KELLER COMMUNITY CENTER, 11669 WA-21 KELLER, WA.	5/1/2025 5/8/2025 5/15/2025 5/22/2025 5/29/2025	1PM-3PM
METALINE FALLS MOBILE FOOD PANTRY 101 W. 5 th AVE. METALINE FALLS, WA.	5/30/2025	11AM-1PM
INCHELIUM FOOD GIVEAWAY 9 CTR. LP. INCHELIUM, WA.	5/28/2025	1PM-3PM
DAVENPORT FOOD GIVEAWAY 6 th & PARK ST. DAVENPORT, WA. 99122	5/8/2025	11AM-2PM
GRAND COULEE FOOD GIVEAWAY CHURCH OF NAZARENE, 45925 WA-174 GRAND <u>COULEE</u> , WA.	5/1/2025 5/15/2025	11AM-1PM

Free food items will be provided to anyone in need of food assistance while supplies last. Our Mobile Market free food distributions serve people facing hunger. No appointment needed. Rural Resources Community Action is an equal opportunity provider.





Dementia Caregiver Support Group

**Every second and last Wednesday of
the month starting 10/09/2024**

Noon until 1pm

Eureka Gulch Community Centre/Far
right room

75 N Keller St, Republic, WA, 99166



**PRESCHOOL
HEAD START * ECEAP *
CHILD CARE PROGRAMS**

NORTHEAST WASHINGTON

Early Childhood



PROGRAM

No Cost Full Day Classes:

Chewelah Head Start
Colville Head Start
Newport Head Start
Kettle Falls ECEAP
Valley ECEAP

No Cost Part Day Classes:

Kettle Falls Head Start
Springdale ECEAP

Colville Child Care:

Smart Start
Learning Center
(Working Connections Accepted)



**ENROLL
TODAY!**

1-855-405-4888

SCAN TO APPLY

ONLINE



Rural
Resources
Early Childhood



Support Group for Family Caregivers

Come join us as we talk about
ways to support you.

Time: 10:00 am-11:00 am

Location: Rural Resources Community Action
956 S. Main Street Suite A
Colville WA 99114

1ST
TUESDAY
OF THE
MONTH

2025



For more information or
questions please contact

Lindsey 509-685-6003

Caregiver Support Group

Providing a safe space for caregivers to share their joys, frustrations, knowledge and support to others in similar circumstances.

2nd and 4th Mondays

*via Zoom
at 3pm*



Contact Rheva Wren for more information!
rwren@ruralresources.org
(509)332-0365 ext 8002

Rural
Resources
Community Action





Kinship Navigation & Kinship Caregiver Support Program

Kinship Navigation and KCSP provides advocacy, information, and referral services to relative caregivers. Our program provides information about how to access and apply for services as well as problem solve and advocate for Kinship Families when issues arrive. Call our Kinship Navigator for program details!

(509)684-8421 X 6059

Serving
Ferry County
Pend Oreille County and
Stevens County





Senior Legal Assistance

Participants must be 60 years of age or older.

Partnering with Local Attorneys to Provide Seniors in Ferry, Pend Oreille, Stevens, and Whitman Counties with:

Give us a call
to see how we can
assist you!
(509)684-3932



Health and Personal Care
Wills and Estate Planning
Power of Attorney
Guardianship
Insurance Issues
Public Benefits
and More!

FREE Diapers!

- Available for any parent including expectant moms, grandparent, or foster parent.
- All children up to the month of their 5th birthday are eligible.
- No income restrictions to participate.
- PREPARES currently provides the following diaper amounts:

→ Sizes Newborn through 6: 50 diapers per month per child*
→ Sizes 2T/3T, 3T/4T, 4T/5T pullups: about 25 per month per child*

Diapers are also available for expectant moms (25 diapers per month).

One package of baby wipes per month per family* is also provided.

Please note: Although PREPARES diapers are distributed in various locations within Stevens, Ferry, and East Adams counties, each child can only receive diapers or pull-ups and wipes at one location per month.

WHERE: *Immaculate Conception Parish
320 North Maple, Colville WA*

WHEN: *3rd Saturday of every month
11:30 am – 1 pm*

2025 Distribution Schedule

January 18	February 15	March 15	April 19
May 17	June 21	July 19	August 16
September 20	October 18	November 15	December 20

For more information, call or text Pat Taylor 509-942-9592

**Diapers, pullups and wipes are always subject to availability.*



FREE LUNCH

MONDAYS – LUNCH
COLVILLE COMMUNITY CHURCH 11:30AM – 12:30 PM
930 S. ELM STREET

TUESDAYS – LUNCH
SEVENTH DAY ADVENTIST CHURCH 11:30AM – 12:30 PM
138 E. CEDAR LOOP

WEDNESDAYS – LUNCH
FREE METHODIST CHURCH 11:30AM – 12:30 PM
1221 E. HAWTHORNE AVE

THURSDAYS – LUNCH
IMMACULATE CONCEPTION CATHOLIC CHURCH
11:30AM – 12:30 PM
320 N. MAPLE ST.

FRIDAYS – LUNCH
CONGREGATIONAL UNITED CHURCH OF CHRIST
11:30AM -12:30 PM
205 N. MAPLE ST.

COMMUNITY FRIENDSHIP FEAST
*SPONSORED BY THE MEMBERS OF
THE COLVILLE FAITH COMMUNITY*

STEVENS COUNTY RESOURCES

Colville

Warming Center (American Legion)

103 E. 6th St. Colville, WA Entrance is Main and 7th
(509) 684-8480 or colvillewarm@gmail.com - Doors open at 5 pm when the temperature is 25 degrees.

Hope Street Stop

528 S Wynne St. Colville WA (509) 690-8111 or hopestreetreststop@gmail.com Provides showers, laundry, & snacks. Hours: Monday - Friday 8am - 5pm

Colville Volunteer Food and Resource Center

210 S Wynne St, Colville, WA 99114 (509) 684-2971

<https://colvillefoodbank.org>

May help with utilities (shut off notice required) & rent (eviction notice required). No deposits for utilities or rent. Must provide proof of address.

They are open on the second and fourth Thursday of every month.

Normal Hours: Tuesday, Wednesday, & Friday 10:00am – 12:30pm

Victim Services Center

956 South Main Street, Colville WA 99114 24 hr. Help Line (509) 684-6139

Provides crisis support, referrals to counseling, medical advocacy & legal advocacy for victims. Hours: Monday - Friday 8:00am – 5:00pm

Sharing House (Momentum Church- Assembly of God)

516 E. Glen Ave, Colville, WA 99114 (509) 684-4721

Provides free clothing & other various necessities. Hours: Tuesday 9:00am-12:00pm

You can access the Sharing House from the alley just east of the main church building.

New Family Life Services

144 W 5th Ave, Colville, WA 99114 (509) 684-9895

Provides pregnancy testing supportive services, peer counseling and maternity housing with three rooms. These services are free, confidential and the staff is very compassionate.

Hours: Tuesday & Thursday 11:00am-5:00pm, Wednesday & Friday 9:00am-1:00pm

Stevens County Shelter

956 S Main St, Colville, WA 99114 (509) 684-8421

Provides temporary shelter and referral to other services for individuals and families who are experiencing homelessness. Hours: Monday - Friday 8am – 4pm

Hope Vineyard

184 Degrief Rd, Colville, WA 99114 (509) 685-9272 Provides access to the food bank & prayer ministry. Hours: 1st and 3rd Thursday of every month 1:00pm-2:30pm

Community Colleges of Spokane - Colville Branch

985 S Elm St. Colville, WA 99114 (509) 685-2120

Community Clothing closet. Provide gently used business/work attire.

Call for hours of operation.

Prepares Diaper Distribution – Pregnancy and Parenting Support

Immaculate Conception Catholic Church

320 N Maple St. Colville, WA 99114 (509) 684-6223

Free diaper distribution. All children under the age of 5 are eligible for diapers, pull ups, and wipes.

Hours: 3rd Saturday of every month 11:30am - 1pm

Stevens County Veteran Services Office (SCVSO)

232 Williams Lake Rd. Colville, WA 99114 (509) 685-2837

Hours: Monday-Friday 8:00am-Noon, 1:00pm-4:30pm (Closed for an hour during lunch)

Sevent Day Adventist Church

138 Cedar Loop Colville, WA 509-738-4088

Hours: Tuesday 9:00am-2:00pm

Addy

Rescue Mission

1390 Addy-Main St, Addy, WA 99101 (509) 935-6633

AA Meetings Monday's at 5pm

Food, Clothing, Housewares, Information, and Referral, On-site lunches and Christian Counseling. Hours: Thursday 9:00am-2:00pm

Chewelah

Food Bank

302 E Main Ave, Chewelah, WA 99109 (509) 936-9155

Supplement a three (3) day supply of five food groups, plus many extras.

Hours: Thursdays 10:00am – 2:00pm

Prepares Diaper Distribution – Pregnancy and Parenting Support

St. Mary of the Rosary Catholic Church

502 E. Main Avenue, Chewelah, WA. 99109

Free diaper distribution. All children under the age of 5 are eligible for diapers, pull ups, and wipes.

Hours: 2nd Thursday of every month 10am – 11:30am

Ford

Ford Food Pantry

5227 Main St. Ford, WA. 99013 (509) 419-8403 or (509) 258-4329

Hours: 2nd Wednesday of the month 11:00am-1:00pm

Hunters

Hunters Food Bank

5061 Lemon Ave, Hunters, WA 99137 (509) 722-3332

Hours: Wednesdays 10:00am -1:00pm

Kettle Falls

Kettle Falls Community Food Bank

472 Meyers St, Kettle Falls, WA 99141 (509) 738-2326

Provides dry goods, dairy, fresh produce when available, and meat.

Hours: Monday - Thursday 10:00am-2:00pm

Kettle Falls Free Clothing Room

Across from Kettle Falls Food Bank in big grey building. Provides clothing, household furniture and household items.

Hours: Tuesdays 9am – 12pm (may not always be open due to volunteer availability)

Orient

Food Pantry

356 Main Street, Orient WA

Food distribution: Monday-Thursday 11:00am-5:00pm, Friday 11:00am-3:00pm

Loon Lake

Food Pantry

3945 Fir St. Loon Lake, WA.99148 (509) 233-8450

Provides food, referrals, and assistance with emergencies. There is a small resource center available with Medicare Health Insurance information and low-income family referrals.

Hours: Mondays and Thursdays 9:00am – 12:45pm

Northport

Food Bank

111 Center Ave. Northport, WA. 99157 (509) 732-4524

Non-perishables and nutrition produce.

Hours: Mondays 8:00am – 12:00pm

Springdale

Food Pantry

206 N. 2nd St. Springdale, WA. 99173 (509) 998-9915

Provides food and resource assistance.

Hours: 3rd Wednesday of every month 3:00pm – 5:00pm

Tum Tum

Food Bank

6424 Hwy 291 Nine Mile Falls WA. 99026 (Back side of Tum Tum Community Center)

(509) 981-3782 Provides food and resource assistance.

Hours: 1st and 3rd Saturdays of the month 9:00am – 11:00am

Valley

Food Bank

3130 Church Rd. Valley, WA. 99181 (509) 937-4265 or (509) 935-6863

Provides food and resource assistance. Hours: Mondays 12:00pm – 3:00pm

Diner's Choice

Developed by the Tri-County Senior Nutrition Program, Diner's Choice issues coupons for meals at participating restaurants in Ferry, Pend Oreille and Stevens Counties and enables seniors to go out and meet with friends for a meal any time the restaurants are open. Participating restaurants offer many different meal choices with menus designed to meet at least one-third of recommended daily nutritional needs. Best of all, meals are provided on a donation basis, so no senior goes hungry.

Participating Restaurants

COLVILLE

Eagles Lodge

608 N. Wynne St.

Colville Senior Center

(Tue & Thurs. Only)

231 W. Elep Ave

CHEWELAH

Mistequa Casino

2555 Smith Rd

Subway

713 N. Park St

ORIENT

Beardslee Family Restaurant

26009 Hwy 395 N.

KETTLE FALLS

TJ's Bar & Grill

305 E. Third Ave

NEWPORT

Newport Hospital- Pine Street Café

714 W. Pine St

Audrey's Restaurant

33239 Hwy 2

NINE MILE FALLS

Wagon Wheel Grill

5978 Hwy 291 #12

REPUBLIC

18 North Kitchen & Bar

18 N. Clark Ave

SELF HELP

Washington Law Help - www.washingtonlawhelp.org

- This website will allow anyone to search about legal issues, needed forms, venue, legal access to justice and much more, in a variety of languages.
- There are subtopic categories including all civil matters and even information about criminal proceedings.
- Clicking on a named topic will bring pages of information including but not limited to, available forms, questions and answers regarding many issues, legal advice, etc.
- This website is linked to NJP which attorneys write and post information that is exactly what is given to a person who talks to the CLEAR line.

Washington State Courts- www.courts.wa.gov

- This website will provide court forms for all civil matters.
- Clicking on the Court Forms link will access all state mandated forms available for many legal matters.
- These forms can be printed in a Work document format.
- Access public case records for all counties in Washington, for Superior, and District Court
- Give anyone the ability to name search someone and find all public court filings for that person
- Access local court rules and news and information produced by AOC.

How Do I find a Lawyer?

- Go to washingtonlawhelp.org
- Read the WashingtonLawHelp.org self-help information on choosing a lawyer
- Search for “How to Find a Lawyer”
- Search on the Washington State Bar Association website:
- Go to www.mywsba.org
- Click on “Lawyer Directory”
- Search by area of practice and/or location
- Ask friends & family for a referral
- You can check a lawyer’s discipline history, eligibility and other information on the Washington State Bar Associations website
- Go to www.mywsba.org
- Click on “Lawyer Dictionary”
- Search by name
- Click on the lawyer in question’s listing to see more information

Legal Resources

Northwest Justice

www.nwjustice.org/home
888-201-1012 or (509)684-7652

Northwest Justice Project for Seniors

Senior Citizens Only 888-387-7111

Stevens County Court Facilitator

Family Law - \$20 (no fee waiver)
509-684-7575

Fulcrum Dispute Resolution Clinic

Mediation 509-838-2799
Fulcrumdispute.org

Moderate Means Program

Family, housing, consumer
& unemployment law cases
www.wsba.org
800-945-9722

Volunteer Lawyers' Program

Spokane County Bar Association
www.spokanebar.org/vlp

Disability Rights Washington

www.disabilityrightswa.org
800-562-2702
Language Interpreters available

Unemployment Law Project

www.unemploymentlawproject.org
509-624-9178

Washington State Attorney General

www.atg.gov

LGBTQ 24 Hour Support

800-547-7433

The Trevor Project for LBTQIA+

1-866-488-7386

World Relief

Refugee & Immigration
509-484-9829

Washington State Courts

www.courts.wa.gov

Washington Law Help

www.washingtonlawhelp.org

Sexual Violence Law Center

svlawcenter.org
844-991-7852

DV/SA Native Coalition

www.womenspirit.net
360-681-3701

Domestic Violence Hotline

800-799-SAFE (7233)
thehotline.org

Tenant Rights

www.tenantsunion.org
206-723-0500

National Sexual Abuse Hotline

1-800-656-4673 (24 hour support)

Washington Recovery Help Line

1-866-783-1511 (24 hour support)

Catholic Charities (Eastern WA)

509-456-2279

Transportation Services - Rural Resources

- We provide **Dial-A-Ride** (DAR) service for persons of special needs (persons with disabilities, too old or young to operate a vehicle, and low income) in Stevens, Pend Oreille, Ferry counties and support for Veterans and access Veteran services in the Highly Rural areas.
Call 1-800-776-9026
- Dial-A-Ride also supports the **remote trips into Colville, Kettle Falls, and Chewelah** for necessities including fresh food, legal, medical, intermodal, recreation, and other peer and social opportunities.
- **Volunteer transportation** is available, primarily for necessary appointments such as medical and social services, usually to larger communities.
- Rural Resources transports passengers to and from outlying areas when it's the closest provider of type.
- We offer **fixed commuter routes** in Northern Stevens County.

Arrive at your stop 10 minutes early, please have your bus fare/pass ready when boarding!

Rural Resources Community Action • www.ruralresources.org 509-684-2961 • 800-776-9026



Rural Resources Community Action Commuter Bus Schedule

Colville to Kettle Falls - Morning

6:55 a.m. Safeway
6:58 a.m. Wal-Mart
7:08 a.m. Kettle Falls Foods
7:12 a.m. Kettle Falls Chevron
7:17 a.m. KF Ranger Station

Kettle Falls to Colville

7:30 a.m. Wal-Mart
7:35 a.m. Safeway
7:40 a.m. Community College
7:45 a.m. Rural Resources

Colville to Kettle Falls

7:50 a.m. Courthouse Astor/Oak
7:53 a.m. Safeway
7:56 a.m. Wal-Mart
8:12 a.m. Kettle Falls Foods
8:15 a.m. Kettle Falls Chevron
8:20 a.m. Columbia Academy

Kettle Falls to Colville

8:35 a.m. Wal-Mart
8:38 a.m. Safeway
8:41 a.m. Community College
8:45 a.m. Rural Resources

Colville to Kettle Falls - Afternoon

3:45 p.m. Rural Resources
3:48 p.m. Community College
3:53 p.m. Safeway
3:58 p.m. Wal-Mart
4:08 p.m. Kettle Falls Foods
4:11 p.m. Kettle Falls Chevron
4:15 p.m. KF Ranger Station

Kettle Falls to Colville

4:35 p.m. Wal-Mart
4:38 p.m. Safeway
4:40 p.m. Astor & Main
4:45 p.m. Rural Resources

Colville to Kettle Falls

4:50 p.m. Safeway
4:55 p.m. Wal-Mart
5:10 p.m. Kettle Falls Foods
5:15 p.m. Kettle Falls Chevron

Kettle Falls to Colville

5:25 p.m. Wal-Mart
5:30 p.m. Safeway
5:35 p.m. Community College

Chewelah to Colville - Morning

7:10 a.m. Casino
7:15 a.m. Safeway
7:25 a.m. Blue Creek
7:30 a.m. Addy
7:45 a.m. Rural Resources
8:00 a.m. Depart Rural Resources

Colville to Chewelah

8:15 a.m. Addy
8:20 a.m. Blue Creek
8:25 a.m. Safeway
8:30 a.m. Casino

Chewelah to Colville - Afternoon

4:05 p.m. Casino
4:10 p.m. Safeway
4:20 p.m. Blue Creek
4:25 p.m. Addy
4:40 p.m. Community College
4:45 p.m. Rural Resources

Colville to Chewelah

5:05 p.m. Addy
5:15 p.m. Blue Creek
5:25 p.m. Safeway
5:30 p.m. Casino

It is the goal of Rural Resources Community Action to provide appropriate and adequate services to eligible individuals regardless of race, religion, color, gender, pregnancy, age (including those over 40), national origin (including ancestry), ethnicity, disability (as defined in the federal Americans with Disabilities Act), marital status, veteran status, sexual orientation, income or any other characteristic protected by applicable federal or state law. If you wish to make a discrimination complaint, contact the Rural Resources Community Action Transportation Department

Plan to arrive at your stop 10 minutes early and have bus fare ready.



Gold Line Schedule:

(Gold Line is not owned or operated by RRCA)

IMPORTANT:

Gold Line is a scheduled bus service in Northeastern Washington State, offering two round trips daily between Kettle Falls, WA and Spokane, WA, along U.S. Highway 395. All vehicles are ADA equipped vehicles with wheelchair lifts.

*A pre-paid reservation required for pick up

SOUTHBOUND – Kettle Falls to Spokane Airport

KFA	Kettle Falls	7:30AM	1:45PM
COL	Colville	7:45AM	2:00PM
ARD	Arden	7:55AM	2:10PM
ADD	Addy	8:05AM	2:20PM
CHE	Chewelah	8:20AM	2:35PM
CCA	Chewelah Casino (Res Only)	8:25AM	2:40PM
LLA	Loon Lake	8:45AM	3:00PM
DPA	Deer Park	9:05AM	3:20PM
NSP	North Spokane	9:25AM	3:50PM
SPT	Spokane STA Plaza	9:45AM	4:00PM
SPO	Spokane Intermodal	9:50AM	4:05PM
GEG	Spokane Airport (Res Only)	10:05AM	4:20PM

NORTHBOUND – Spokane Airport to Kettle Falls

GEG	Spokane Airport (Res Only)	11:05AM	5:20PM
SPO	Spokane STA Plaza	11:20AM	5:35PM
SPT	Spokane Intermodal	11:35AM	5:45PM
NSP	North Spokane	11:55AM	6:05PM
DPA	Deer Park	12:15PM	6:25PM
LLA	Loon Lake (Res Only)	12:30PM	6:40PM
CCA	Chewelah Casino (Res Only)	12:50PM	7:00PM
CHE	Chewelah	12:55PM	7:05PM
ADD	Addy (Res Only)	1:10PM	7:20PM
ARD	Arden	1:20PM	7:30PM
COL	Colville	1:30PM	7:40PM
KFA	Kettle Falls	1:45PM	7:55PM

www.gold-line.us
1-888-739-5395

For your travel convenience, Gold Line operates 7 days a week. Note: Gold Line operations are closed each year on New Year's Day, Easter, July 4th, Thanksgiving, and Christmas Day.